


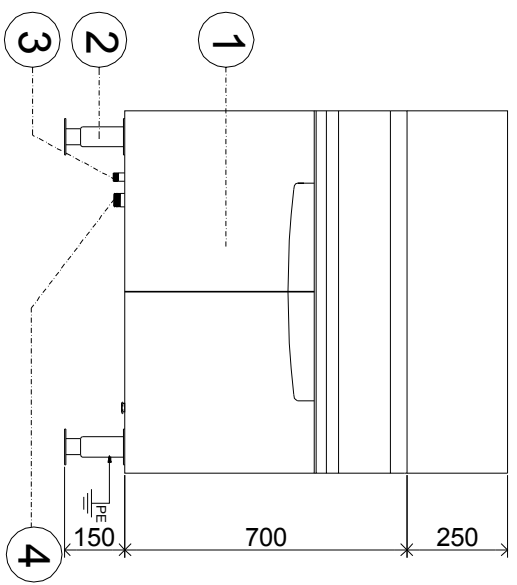


Timsum Streamer BTS40 Marine

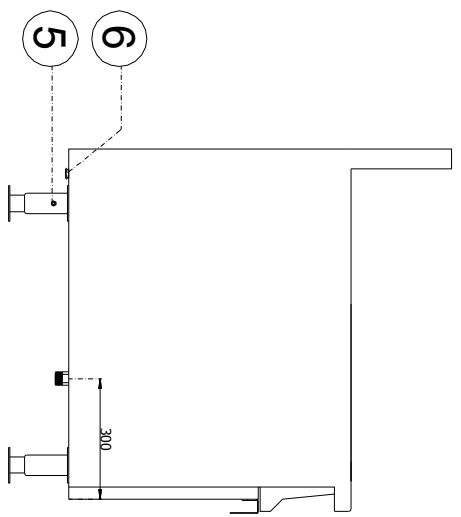
- Complete stainless steel execution
- Automatic heating system is applied
- Automatic water compensation and dry-burning alarm

Product name	Timsum Streamer BTS40 Marine
Size (mm) (w * d * h)	900 * 900 * 850
Technical information	 400V/3PH/60HZ, 21kW, 30.3A

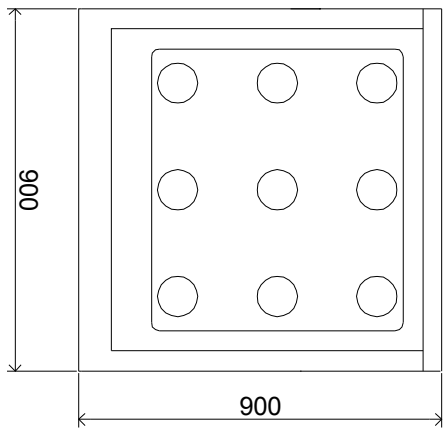
NO.	QUANTITY/SHIP	LOCATION
AMENDMENT DATE	REVISION NO.	
PROJECT	HULL NO.	



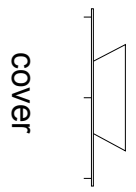
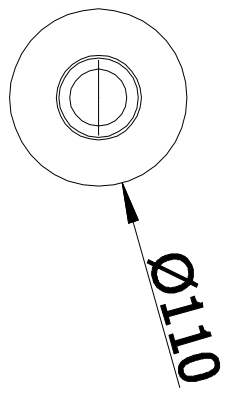
FRONT END VIEW



LEFT END VIEW



PLAN END VIEW



Use this cover if there is
no streamer in use.

3	Water Inlet (DN15 Male)	SUS	6	Cable Gland	Metal
2	Adjustable Leg	SUS	5	Earthing (M6*20)	SUS
1	Door	SUS	4	Water Outlet (DN32 Male)	SUS
NO.	PART NAME	MATERIAL	NO.	PART NAME	MATERIAL

Equipment: **Marine Timsun Streamer**

Model: **BTS40**

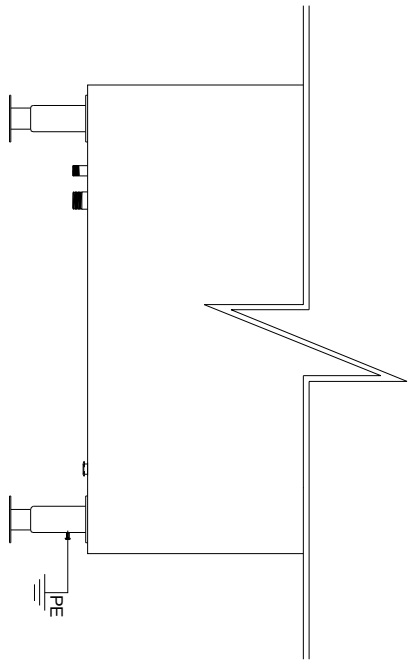
No.18,Deqiyi Rd,Shi'hen Park,Jiangshan Town,Yinzhou DeqingJingpo, China

Tel:+86 574-86397088 Fax:+86 574-86193788
E-mail:sales@bast-marine.com Web:www.bast-marine.com

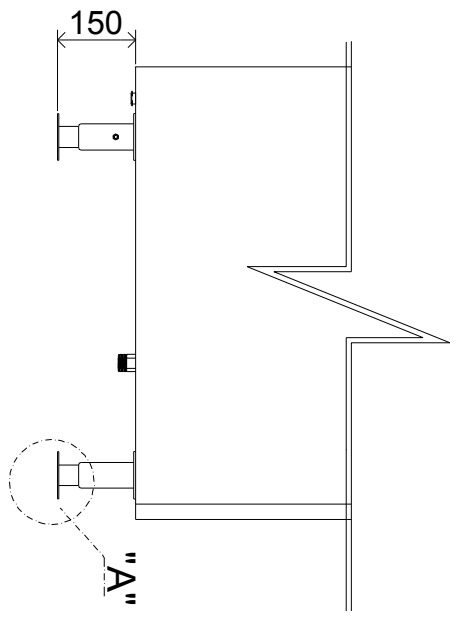


Date:

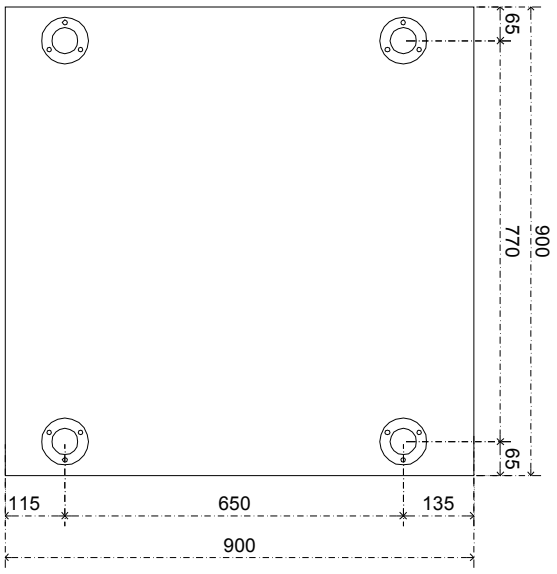
AMENDMENT DATE	REVISION NO.
PROJECT	HULL NO.



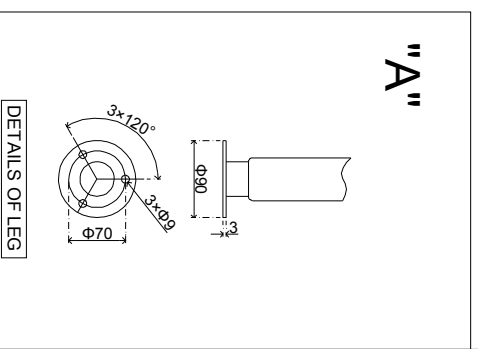
FRONT END VIEW



LEFT END VIEW

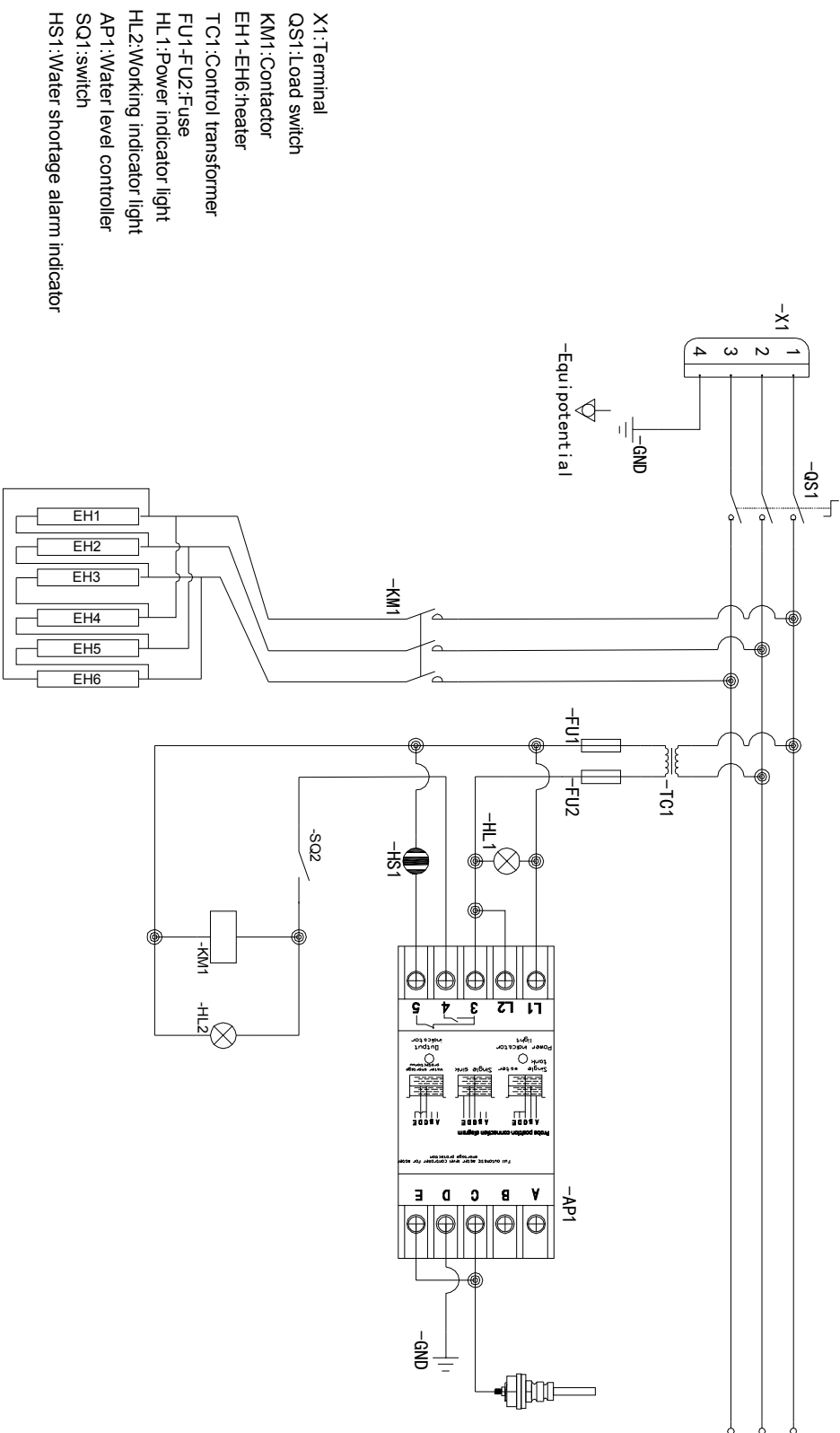


INSTALLING DIMENSION



Equipment: **Marine Timsum Streamer Foundation Detail** Model: **BTS40**

AMENDMENT DATE	REVISION NO.
PROJECT	HULL NO.



- X1: Terminal
- QS1: Load switch
- KM1: Contactor
- EH1-EH6: heater
- TC1: Control transformer
- FU1-FU2: Fuse
- HL1: Power indicator light
- HL2: Working indicator light
- AP1: Water level controller
- SQ1: switch
- HS1: Water shortage alarm indicator

Equipment: **Marine Timsu Streamer Electric Wiring Diagram** Model: **BTS40**