


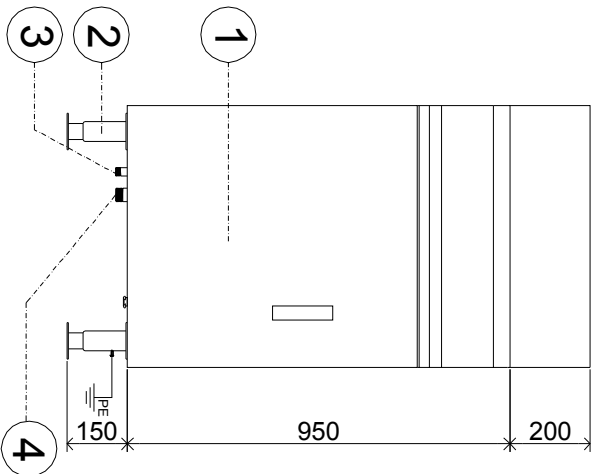


Timsum Streamer BSZ-4/L Marine

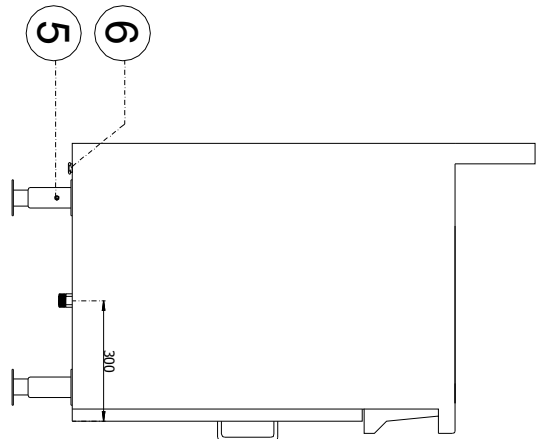
- Complete stainless steel execution
- Automatic heating system is applied
- Automatic water compensation and dry-burning alarm

Product name	Timsum Streamer BSZ-4/L Marine
Size (mm) (w * d * h)	650 * 720 * 950
Technical information	 400V/3PH/60HZ, 9kW, 13A 380V/3PH/50HZ, 9kW, 13.6A 220V/1PH/50HZ, 3kW, 13.6A

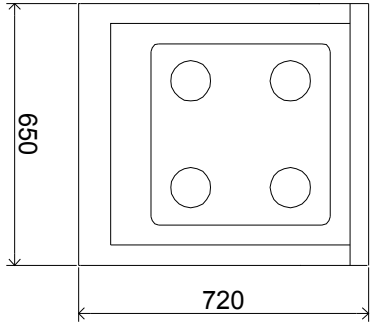
NO.	QUANTITY/SHIP	LOCATION
AMENDMENT DATE	REVISION NO.	
PROJECT	HULL NO.	



FRONT END VIEW



LEFT END VIEW



PLAN END VIEW

3	Water Inlet (DN15 Male)	SUS	6	Cable Gland	Metal
2	Adjustable Leg	SUS	5	Earthing (M6*20)	SUS
1	Door	SUS	4	Water Outlet (DN32 Male)	SUS
NO.	PART NAME	MATERIAL	NO.	PART NAME	MATERIAL

Equipment:

Marine Timsun Streamer

Model:

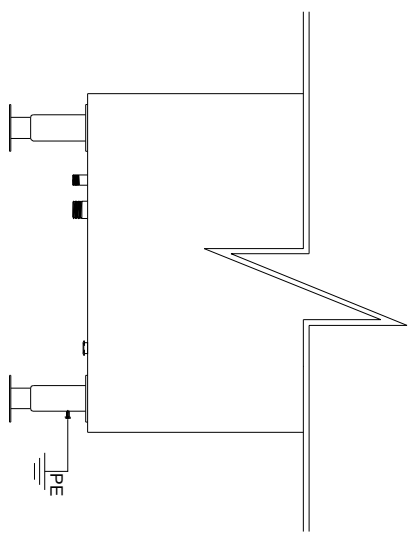
BSZ-4/L

Date: _____

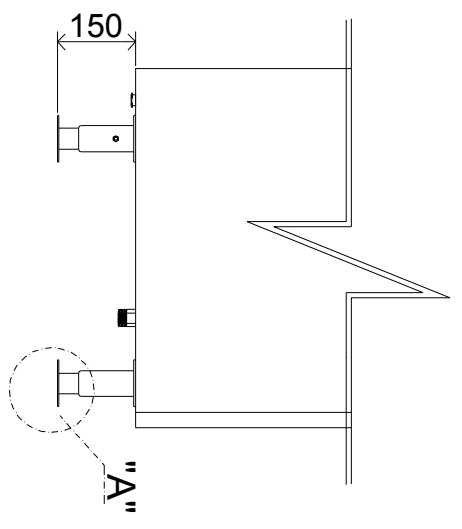


Ningbo BAST-MARINE Electrical Equipment Co., Ltd
 Tel: +86 574-88397088 Fax: +86 574-88193788
 E-mail: sales@bast-marine.com Web: www.bast-marine.com
 No.18, Deying Rd, Schi-hen Park, Jiangshan Town, Yinzhou District, Ningbo, China

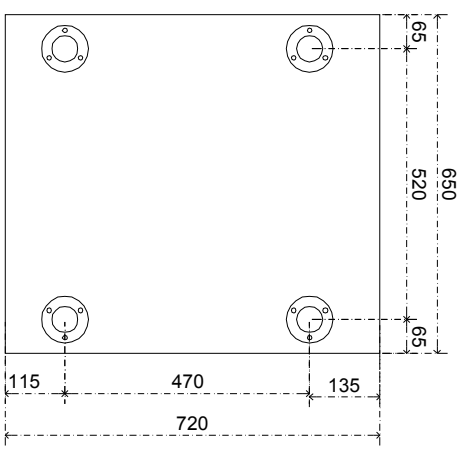
AMENDMENT DATE	REVISION NO.
PROJECT	HULL NO.



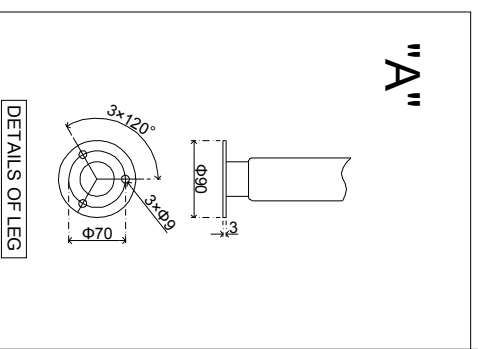
FRONT END VIEW



LEFT END VIEW



INSTALLING DIMENSION

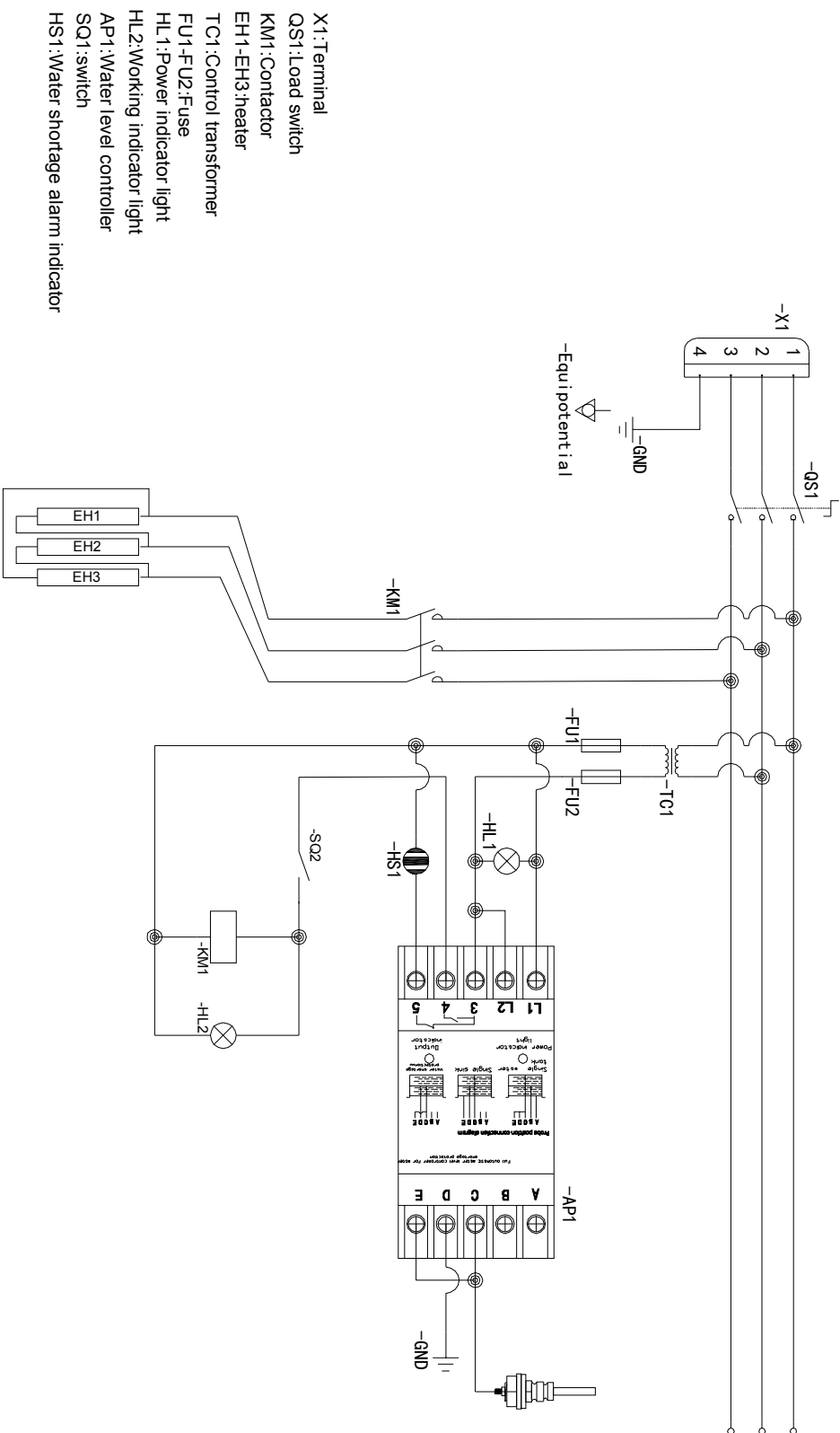


DETAILS OF LEG

Equipment: **Maine Timsum Streamer Foundation Detail**

Model: **BSZ-4/L**

AMENDMENT DATE	REVISION NO.
PROJECT	HULL NO.



Equipment:

Marine Timsu Streamer Electric Wiring Diagram

Model:

BSZ-4/L